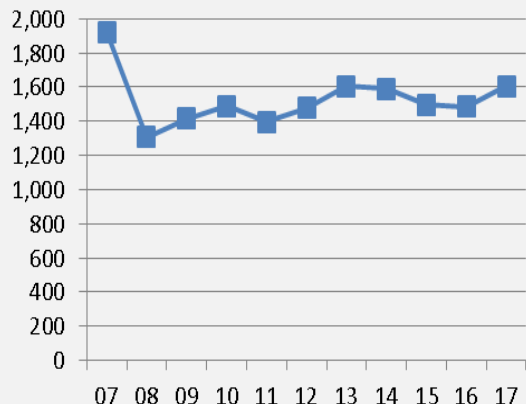
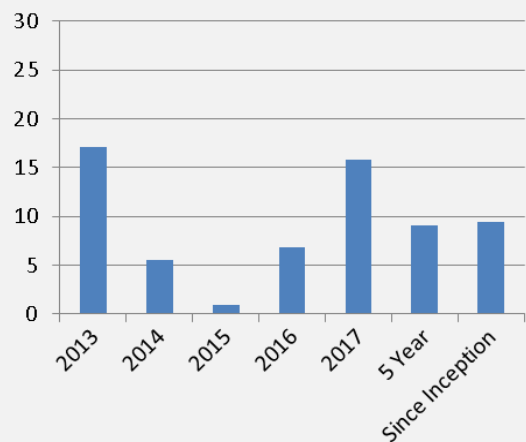


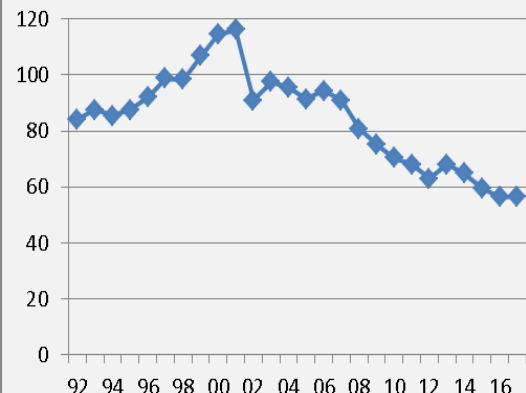
Asset Growth (2008-2017)
(Market Value in Millions)



**Investment Return (2013-2017), 5 Year
and Since Inception**



Funded Ratio (1992-2017)



ACTUARIAL

Funded Ratio	56.66%
Date of Last Valuation	12/17
Actuary	Conduent HR Consulting, LLC
Assumed Rate of Return	7.50%
Targeted Rate of Return	7.50%
Funding Schedule	Closed period, increasing by 4% per year
Net Pension Liability	1,226.2M

	Active	Retired
Number of Members	5,386	6,699
Annualized Salary/Amount in Pay as of 12/31/17	428.8M	217.5M
Actual Payroll/Benefit	425.7M	209.0M
Average Salary/Benefit	79,619	31,873
Average Age	47.64	69.54
Average Service	10.65	NA

AUDIT

Date of Last Audit	6/18
Period Covered	1/1/17-12/31/17
Auditor	KPMG, LLP

Annual Contributions	
Member Contributions	29.8M
Authority Contributions	83.4M
Annual Pension Benefits	209.0M

2017 Return	15.80%
Actuarial Rate of Return	7.50%
2017 NAV	1,603.2
2013-2017 Annualized Return	9.07%
Since Inception	9.45%
Custodian	State Street Bank

Investment Return History

<u>1 Year 2017</u>	<u>5 Year 2017</u>	<u>10 Year 2017</u>
15.80%	9.07%	5.67%
	<u>Since Inception</u>	
	9.45%	

*Returns are gross of fees with the exception of hedge funds which are net of fees